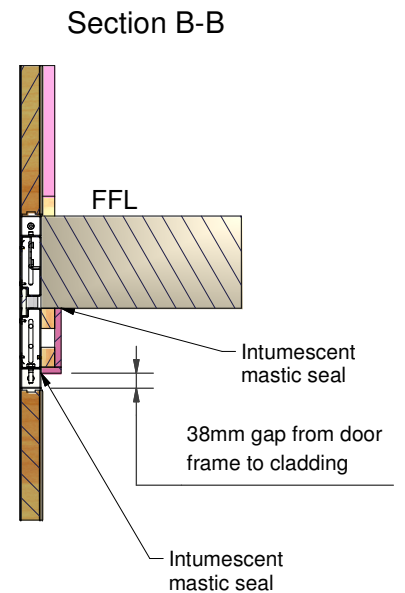
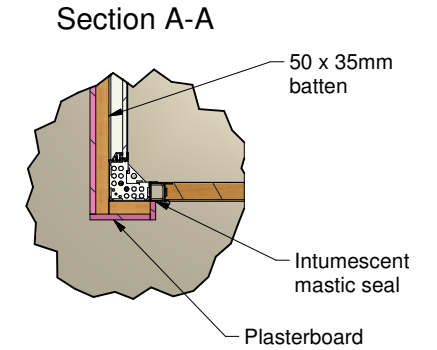
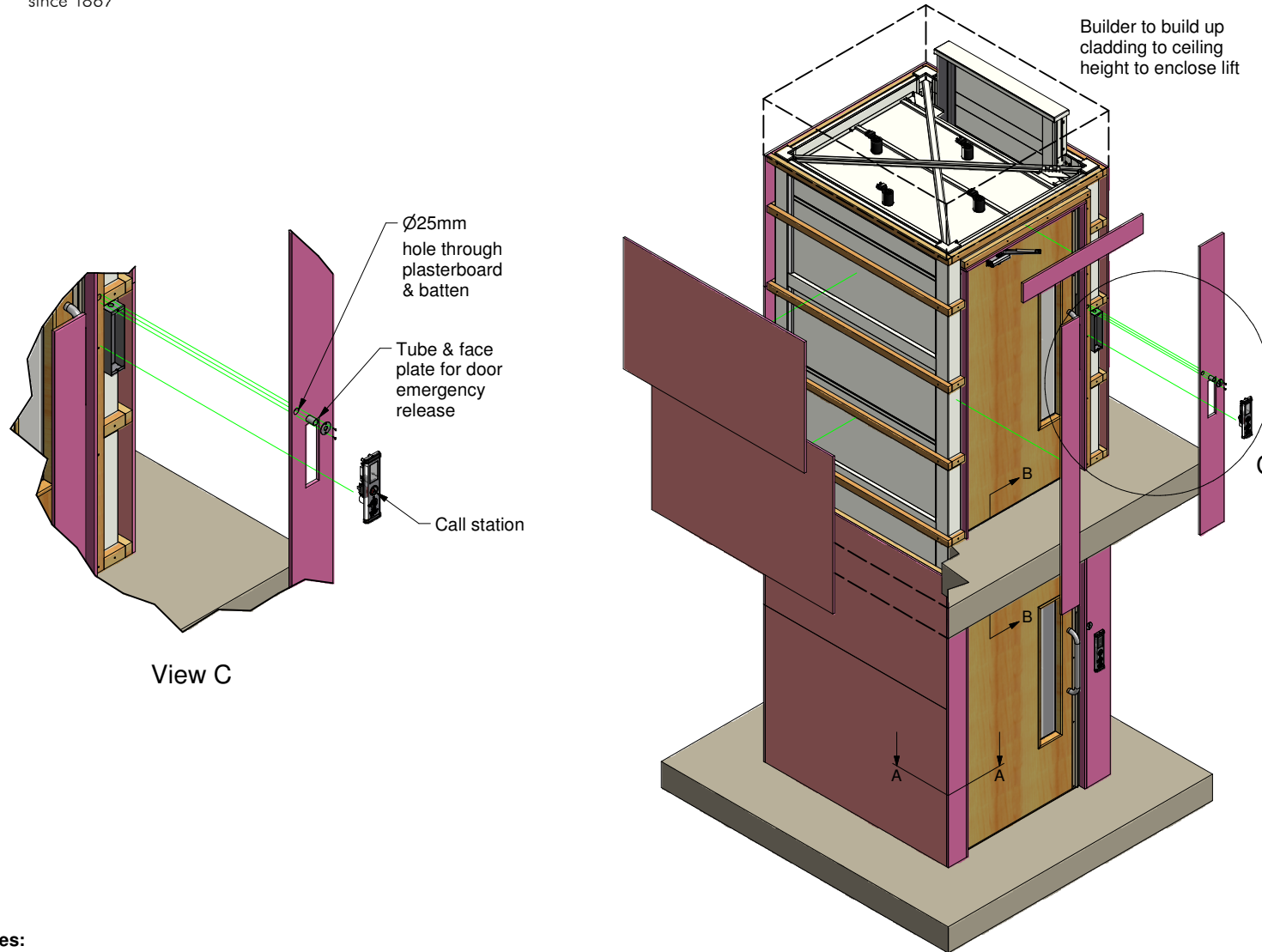




An independent family business since 1867

# Midlift Cladding Details

# Stannah



**Notes:**

1. Steel framework to be supplied pre-drilled for batten fixing.
2. Builder to supply and fit 50 x 35mm timber battens using fixings supplied.
3. Plasterboard cladding thickness to be dependant on fire rating required.
4. All plasterboard cladding shall be supplied and fitted by builder.
5. Doors are beech veneer & supplied lacquered or primed.

**Waiver**

The data sheet is for guidance only & must not be used for proper working drawings. Please contact us for particular details before proceeding. Owing to our policy of continual improvement, we reserve the right to alter specifications & dimensions without prior notice.

**Stannah Lifts Ltd.**  
Anton Mill, Andover,  
Hampshire, SP10 2NX  
Tel: 01264 339090  
www.stannahlifts.co.uk

Information sheet  
**SL 806**  
01/02/2013